



# Certificate of Analysis

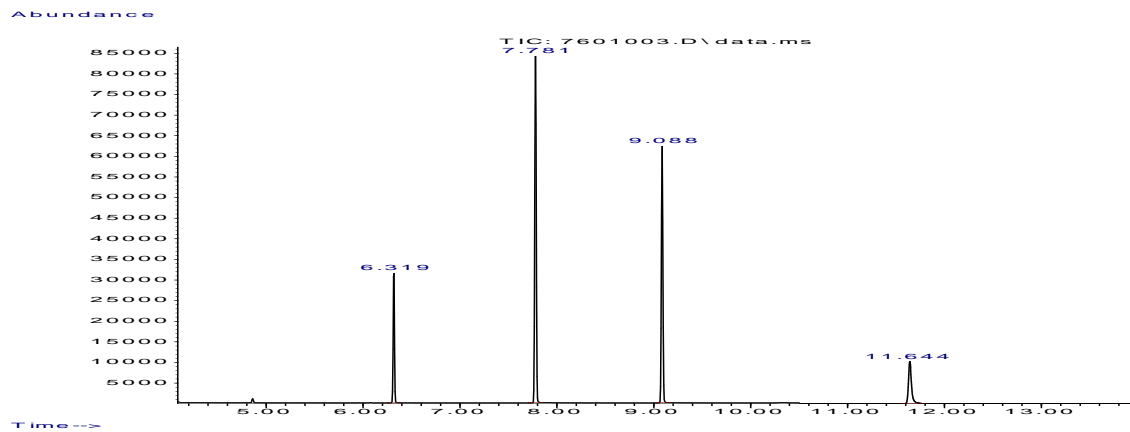
Agilent Part No. 05970-60045

MSD Sampler

## Solution A

Dodecane p-Chlorodiphenyl  
Biphenyl Methyl palmitate

Concentration 10 ng/uL in Isooctane  
Lot 1027500  
Temperature Program 70°C(2 min) -> 210°C(5 min)  
Rate 20°C/min  
Injection Temperature 250°C  
Transfer Temperature 280°C  
Sample Size 1.0 uL  
Column HP-5MS (30m x 0.25mm x 0.25um)  
Flow 1.0 ml/min  
Split 50:1  
SIM 57, 154, 188, 74



Area Percent Report

Data File: D:\msdchem\nov0112\7601003.D  
Acq On : 1 Nov 2012 8:54  
Sample : Sp-05970-60045Z-Part A  
ALS Vial : 76  
Integrator: ChemStation  
DataAcq Meth:60045A.M  
Method : C:\msdchem\1\METHODS\60045A.M

peak #	R.T. min	first scan	max scan	last scan	PK TY	peak height	corr. area	corr. % max.	% of total
1	6.319	403	416	427	BB	32250	305247	35.29%	15.089%
2	7.781	674	687	699	BB	83394	864868	100.00%	42.754%
3	9.088	919	930	942	BB	59332	639341	73.92%	31.605%
4	11.644	1724	1762	1819	BB	10186	213458	24.68%	10.552%

Date of release: 1 November, 2012

Date of expiration: 30 November, 2015

John Conrad  
CSM/TC

